

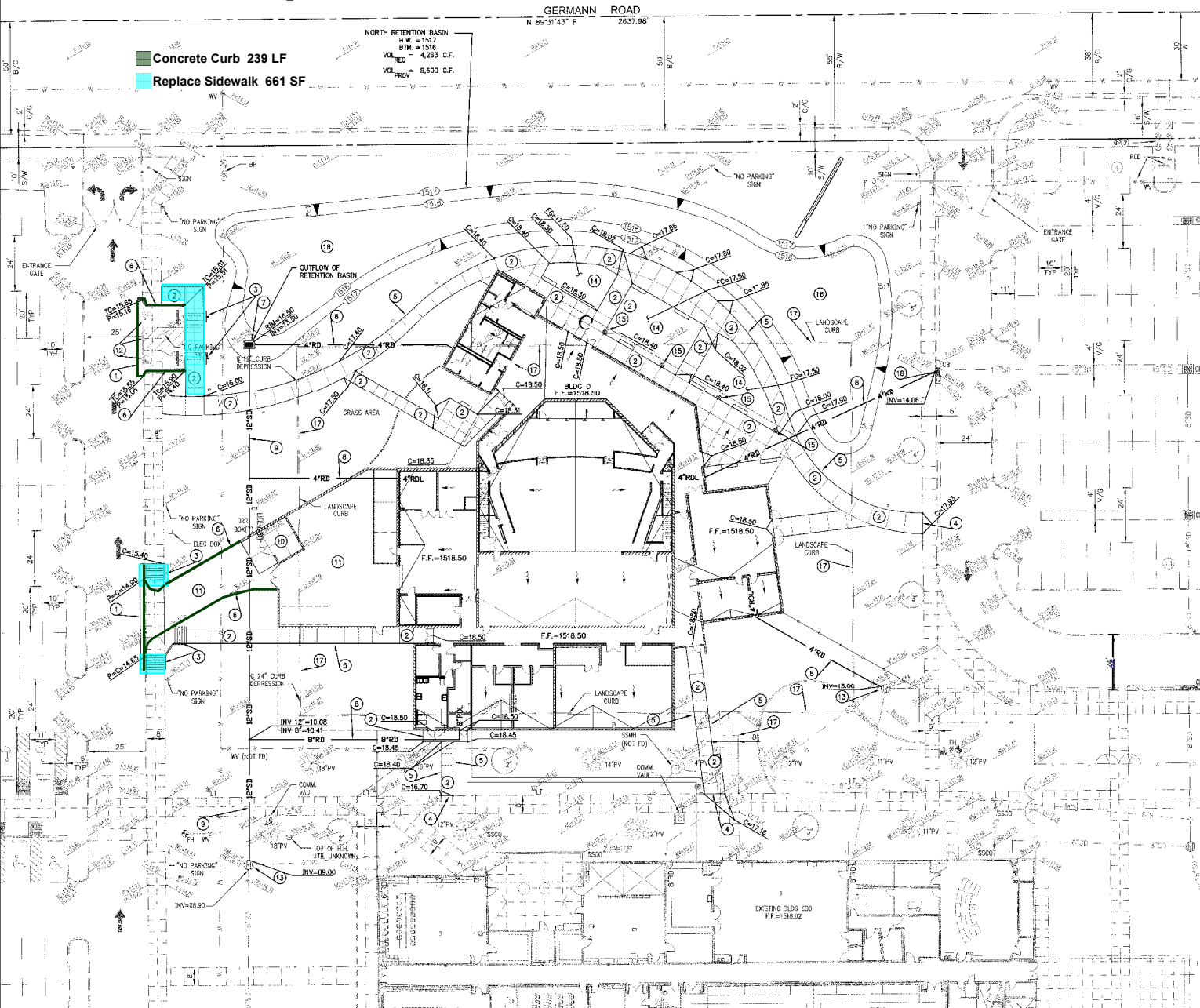
Combs High School Auditorium & Field House  
Adjacent Ways Breakout  
1/9/2018



Description		Unit	Unit Price	Cost
	<b>Concrete</b>			
	Concrete Curb	239 LF	\$ 12.04	\$ 2,876
	Concrete Sidewalk Replacement	661 SF	\$ 6.20	\$ 4,099
				<b>\$ 6,975</b>
	<b>Earthwork</b>			
	Demo Sidewalk	493 SF	\$ 1.17	\$ 576
	Grade Area	1,755 SF	\$ 4.00	\$ 7,020
	Paving	1,202 SF	\$ 6.00	\$ 7,212
	Signage	2 EA	\$ 500.00	\$ 1,000
	Trench & Backfill	675 CY	\$ 10.40	\$ 7,020
	Striping	2 EA	\$ 650.00	\$ 1,300
				<b>\$ 24,128</b>
	<b>Landscaping &amp; Irrigation</b>			
	Remove & Replace existing Landscaping & Irrigation	2,776 SF	\$ 1.57	<b>\$ 4,360</b>
	<b>Site Utilities</b>			
	Fire Line	117 LF	\$ 58.55	<b>\$ 6,850</b>
	<b>Subtotal Direct Cost</b>			<b>\$ 42,313</b>
	General Conditions			
	Construction Contingency	3.000%		\$ 1,269
	City Comments Allowance	0.000%		
	General Liability Insurance	0.840%		\$ 410
	Builders Risk Insurance	0.045%		\$ 22
	Performance & Payment Bond	0.741%		\$ 362
	Sales Tax	6.700%		\$ 2,039
	Contractor Fee	5.000%		\$ 2,443
	<b>Total Construction Cost</b>			<b>\$ 48,859</b>

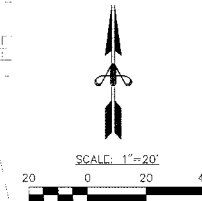


# Concrete Scope



## CONSTRUCTION NOTES

1. GRADING & DRAINAGE:
  1. SLOPE EXISTING PAVEMENT TO NEAR EDGE AND REMOVE EXISTING PAVING, CURBING AND SIDEWALK.
  2. CONSTRUCT NEW 4" THICK SIDEWALK ON 4" A.B.C. PER MAG. STD. DET. 230. SEE LANDSCAPE PLANS FOR SURFACE TREATMENT.
  3. CONSTRUCT SIDEWALK RAMP WITH MAXIMUM LONGITUDINAL SLOPE OF 1 IN 12 AND MAXIMUM CROSS SLOPE OF 1 IN 50.
  4. MATCH EXISTING.
  5. GRADE AT 4:1 SLOPE TO MATCH EXISTING.
  6. CONSTRUCT NEW SINGLE CURB PER MAG. STD. DET. 222, TYPE "A".
  7. CONSTRUCT NEW CATCH BASIN TO ELEVATIONS SHOWN PER MAG. STD. DET. 235.
  8. NEW ROOF DRAIN LEADER AT BUILDING TO BE EXTENDED BELOW GRADE AND CONNECTED TO NEW STORM DRAIN SYSTEM.
  9. INSTALL 12" DIA. (H.D.P.E.) STORM DRAIN PIPE.
  10. CONSTRUCT NEW DUMPSTER ENCLOSURE PER DETAILS SHOWN ON ARCHITECTURAL PLANS.
  11. CONSTRUCT NEW 3" A.C. (C 3/4) ON 7" A.B.C. PAVEMENT ON PREPARED SUBGRADE.
  12. INSTALL AND CONSTRUCT NEW A.D.A. SIGNAGE AND STRIPING. MAXIMUM LONGITUDINAL AND CROSS SLOPE OF 2 PER CENT.
  13. CONNECT NEW STORM DRAIN SYSTEM TO EXISTING MANHOLE.
  14. GRADE PLANTER AREA TO ELEVATION SHOWN FOR RETENTION OF STORM WATER FROM ROOF DOWNSPOUT.
  15. CONSTRUCT SPLASH PAD BELOW DOWNSPOUT PER DETAIL SHOWN ON LANDSCAPE ARCHITECT'S PLANS.
  16. GRADE RETENTION BASIN TO ELEVATIONS SHOWN.
  17. REMOVE EXISTING.
  18. CONSTRUCT NEW STORM DRAIN SYSTEM TO EXISTING CATCH BASIN.



ATHERTON ENGINEERING, INC.  
CIVIL ENGINEERS AND LAND SURVEYORS  
1302 E. MEADOWS BLVD., PHOENIX, AZ 85014-4228  
(602) 279-2333 • FAX (602) 280-1908  
JOB NO: 17-11

GRADING & DRAINAGE PLAN

COMBS HS AUDITORIUM & FIELD HOUSE

Westlake  
Reed  
Leskosky

DLR Group  
Page 3 of 17

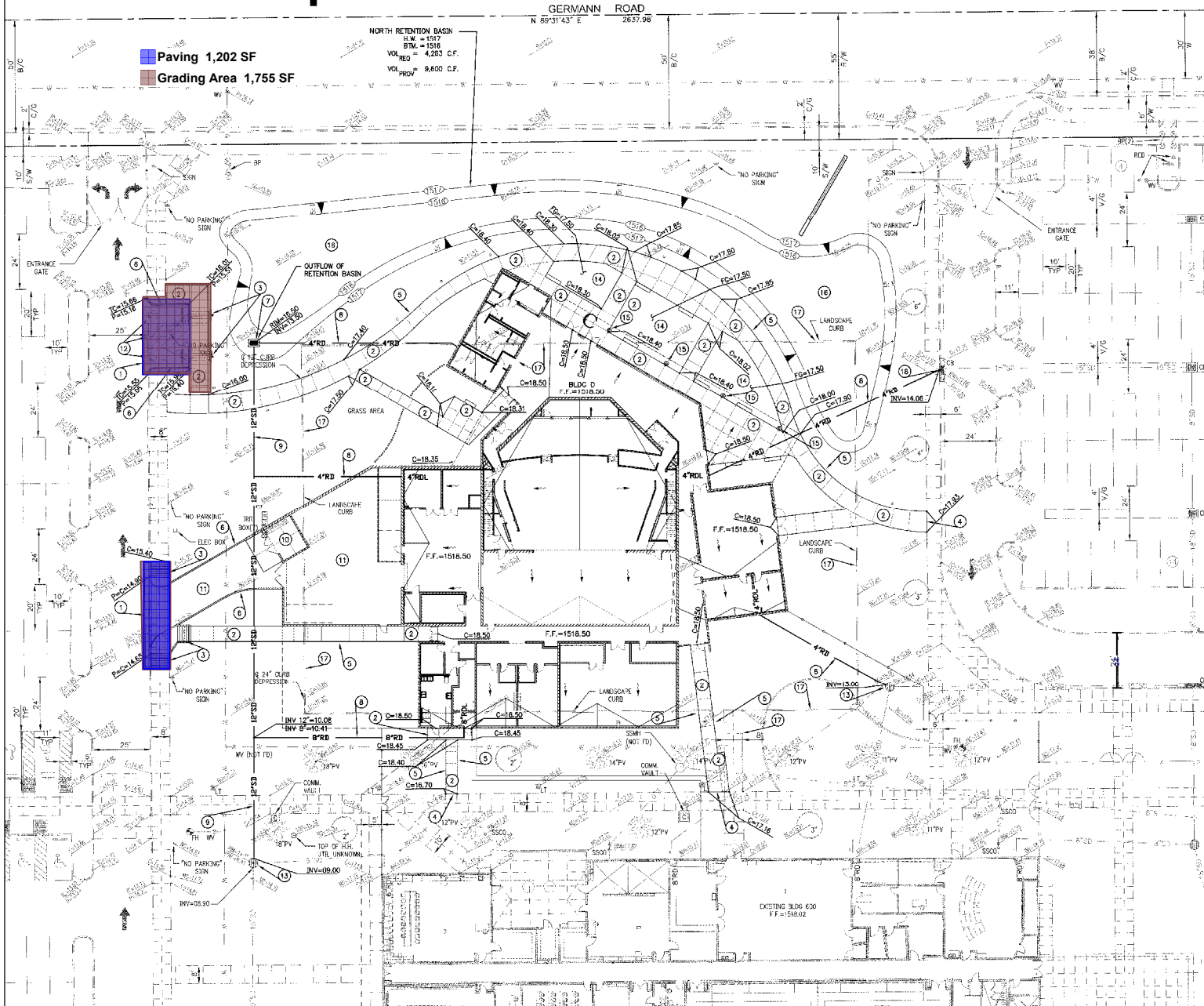
100% CONSTRUCTION  
DOCUMENTS  
2017-12-28

2500 E. GERMAIN RD.  
SAN JUAN VALLEY, AZ 86140

SPR-041-17



# Earthwork Scope



## CONSTRUCTION NOTES

1. GRADING & DRAINAGE:
2. SAWCUT EXISTING PAVEMENT TO NEAR EDGE AND REMOVE EXISTING PAVING, CURBING AND SIDEWALK.
3. CONSTRUCT NEW 4" THICK SIDEWALK ON 4" A.B.C. PER MAG. STD. DET. 230. SEE LANDSCAPE PLANS FOR SURFACE TREATMENT.
4. CONSTRUCT SIDEWALK RAMP WITH MAXIMUM LONGITUDINAL SLOPE OF 1 IN 12 AND MAXIMUM CROSS SLOPE OF 1 IN 50.
5. MATCH EXISTING.
6. GRADE AT 4:1 SLOPE TO MATCH EXISTING.
7. CONSTRUCT NEW SINGLE CURB PER MAG. STD. DET. 222, TYPE "A".
8. CONSTRUCT NEW CATCH BASIN TO ELEVATIONS SHOWN PER MAG. STD. DET. 235.
9. NEW ROOF DRAIN LEADER AT BUILDING TO BE EXTENDED BELOW GRADE AND CONNECTED TO NEW STORM DRAIN SYSTEM.
10. INSTALL 12" DIA. (H.D.P.E.) STORM DRAIN PIPE.
11. CONSTRUCT NEW DUMPSTER ENCLOSURE PER DETAILS SHOWN ON ARCHITECTURAL PLANS.
12. CONSTRUCT NEW 3" A.C. (C 3/4) ON 7" A.B.C. PAVEMENT ON PREPARED SUBGRADE.
13. INSTALL AND CONSTRUCT NEW A.D.A. SIGNAGE AND STRIPING. MAXIMUM LONGITUDINAL AND CROSS SLOPE OF 2 PER CENT.
14. CONNECT NEW STORM DRAIN SYSTEM TO EXISTING MANHOLE.
15. GRADE PLANTER AREA TO ELEVATIONS SHOWN FOR RETENTION OF STORM WATER FROM ROOF DOWNSPOUT.
16. CONSTRUCT SPLASH PAD BELOW DOWNSPOUT PER DETAIL SHOWN ON LANDSCAPE ARCHITECT'S PLANS.
17. GRADE RETENTION BASIN TO ELEVATIONS SHOWN.
18. REMOVE EXISTING.
19. CONSTRUCT NEW STORM DRAIN SYSTEM TO EXISTING CATCH BASIN.

GRADING & DRAINAGE PLAN

2500 E. GERMANN RD.  
SAN JUAN VALLEY, AZ 86140

COMBS HS AUDITORIUM & FIELD HOUSE

C1.1

Westlake  
Reed  
Leskosky

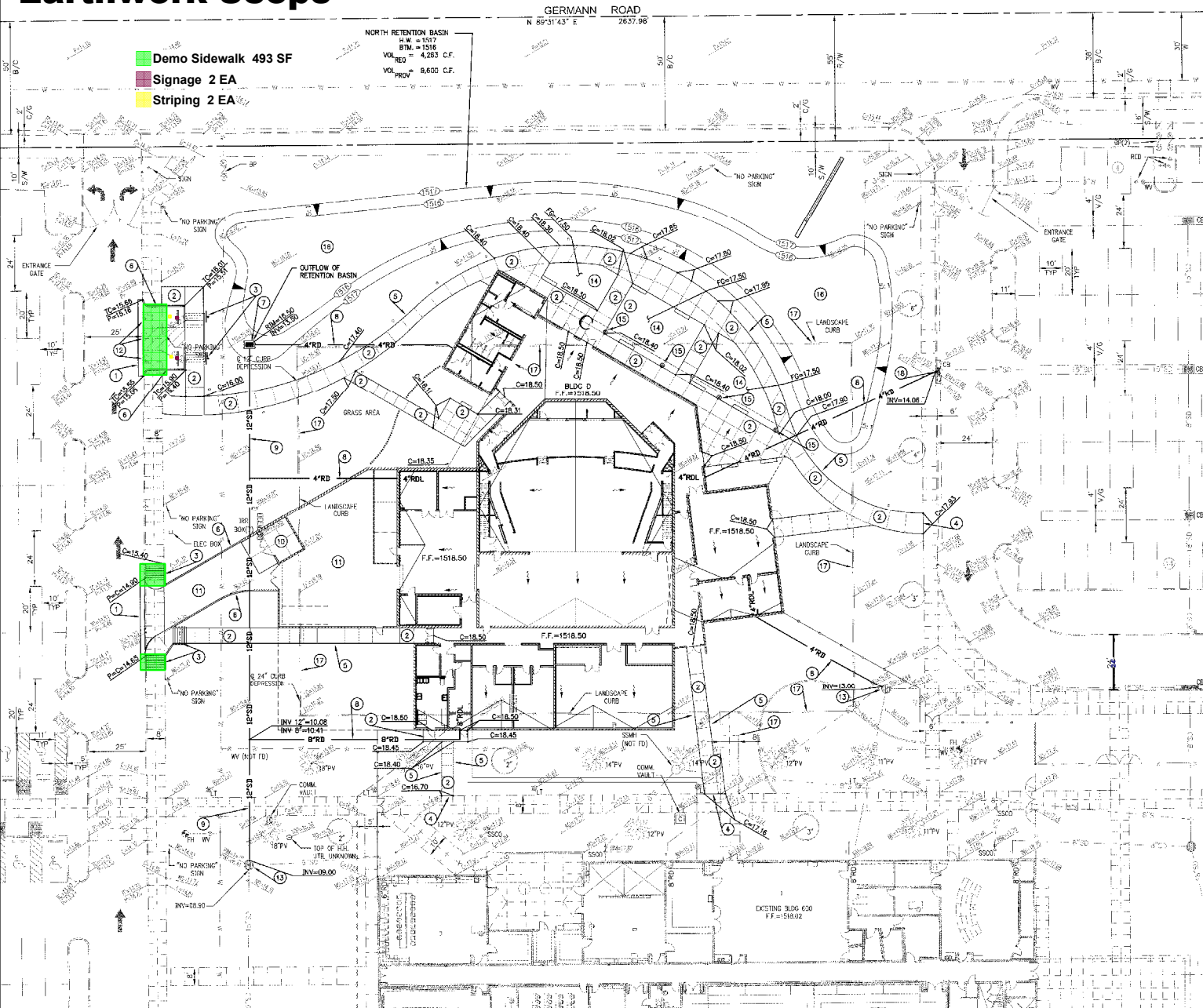
DLR Group

Page 3 of 17

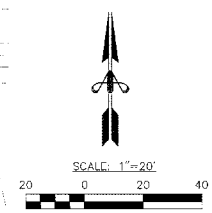
SPR-041-17



# Earthwork Scope



- ### CONSTRUCTION NOTES
1. GRADING & DRAINAGE:
    1. SAWCUT EXISTING PAVEMENT TO NEAR EDGE AND REMOVE EXISTING PAVING, CURBING AND SIDEWALK.
    2. CONSTRUCT NEW 4" THICK SIDEWALK ON 4" A.B.C. PER MAG. STD. DET. 230. SEE LANDSCAPE PLANS FOR SURFACE TREATMENT.
    3. CONSTRUCT SIDEWALK RAMP WITH MAXIMUM LONGITUDINAL SLOPE OF 1 IN 12 AND MAXIMUM CROSS SLOPE OF 1 IN 50.
    4. MATCH EXISTING.
    5. GRADE AT 4:1 SLOPE TO MATCH EXISTING.
    6. CONSTRUCT NEW SINGLE CURB PER MAG. STD. DET. 222, TYPE "A".
    7. CONSTRUCT NEW CATCH BASIN TO ELEVATIONS SHOWN PER MAG. STD. DET. 235.
    8. NEW ROOF DRAIN LEADER AT BUILDING TO BE EXTENDED BELOW GRADE AND CONNECTED TO NEW STORM DRAIN SYSTEM.
    9. INSTALL 12" DIA. (H.D.P.E.) STORM DRAIN PIPE.
    10. CONSTRUCT NEW DUMPSTER ENCLOSURE PER DETAILS SHOWN ON ARCHITECTURAL PLANS.
    11. CONSTRUCT NEW 3" A.C. (C 3/4) ON 7" A.B.C. PAVEMENT ON PREPARED SUBGRADE.
    12. INSTALL AND CONSTRUCT NEW A.D.A. SIGNAGE AND STRIPING. MAXIMUM LONGITUDINAL AND CROSS SLOPE OF 2 PER CENT.
    13. CONNECT NEW STORM DRAIN SYSTEM TO EXISTING MANHOLE.
    14. GRADE PLANTER AREA TO ELEVATION SHOWN FOR RETENTION OF STORM WATER FROM ROOF DOWNSPOUT.
    15. CONSTRUCT SPLASH PAD BELOW DOWNSPOUT PER DETAIL SHOWN ON LANDSCAPE ARCHITECT'S PLANS.
    16. GRADE RETENTION BASIN TO ELEVATIONS SHOWN.
    17. REMOVE EXISTING.
    18. CONNECT NEW STORM DRAIN SYSTEM TO EXISTING CATCH BASIN.





Contract Awarded at West Valley  
Sealing and Stamping for Public Information



**ATHERTON ENGINEERING, INC.**  
CIVIL ENGINEERS AND LAND SURVEYORS  
1302 E. MEADOWBROOK AVE., PHOENIX, AZ 85014-4228  
(602) 279-2333 • FAX (602) 280-1908  
JOB NO: 17-11



100% CONSTRUCTION DOCUMENTS  
2017-12-28

2500 E. GERMANN RD.  
SAN JUAN VALLEY, AZ 86140

**GRADING & DRAINAGE PLAN**

**COMBS HS AUDITORIUM & FIELD HOUSE**

**C1.1**  
SHEET 2 OF 5  
3/17/2018  
12:26:17

**Westlake**  
**Reed**  
**Leskosky**

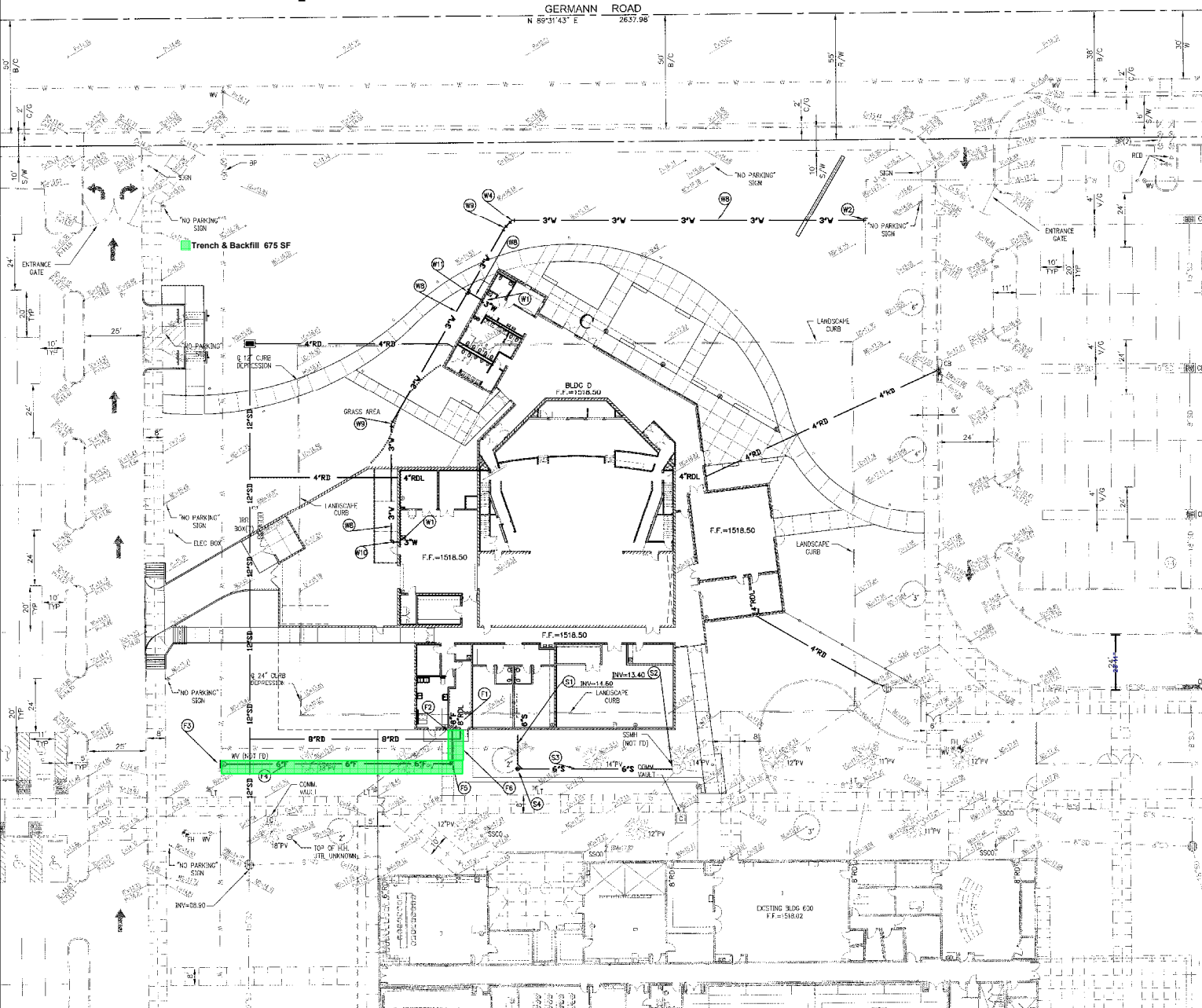
**DLR Group**

Page 3 of 17

SPR-041-17

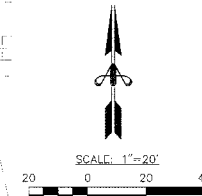


# Earthwork Scope



## CONSTRUCTION NOTES

- WATER LINE:**
- W1 FOR CONTINUATION AT BUILDING AND BUILDING SHUT-OFF VALVE, SEE PLUMBING PLANS.
  - W2 CONTRACTOR TO FIELD VERIFY EXACT LOCATION OF EXISTING 3" WATER LINE SUB-OUT. CONNECT NEW WATER LINE.
  - W3 INSTALL 3" - 45 DEGREE BEND. CONSTRUCT MEG-A-LUG RESTRAINED JOINTS.
  - W6 INSTALL 3" PVC (SCH-40 40) WATER LINE. WATER LINE SHALL HAVE A MINIMUM COVER OF 18-INCHES. TRENCH, BACKFILL AND MARKER TAPE PER DETAIL SHOWN ON SHEET C1.4.
  - W9 INSTALL 3" - 22-1/2 DEGREE BEND. CONSTRUCT MEG-A-LUG RESTRAINED JOINTS.
  - W10 INSTALL 3" - 90 DEGREE BEND. CONSTRUCT MEG-A-LUG RESTRAINED JOINTS.
  - W11 INSTALL 3"x3" TEE.
- FIRE LINE:**
- F1 FOR CONTINUATION AT BUILDING AND APPROVED VERTICAL CHECK VALVE IN RISER, SEE FIRE PROTECTION PLANS BY OTHERS. CONTRACTOR TO COORDINATE LOCATION OF INSPECTION TEST PORT(S). CONSTRUCT 4" X 4" X 4" CONCRETE PAD ADJACENT TO INSPECTION TEST PORT(S) THAT ARE NOT ADJACENT TO SIDEWALK. PROVIDE POSITIVE DRAINAGE AWAY FROM BUILDING.
  - F2 FIRE DEPARTMENT CONNECTION ON BUILDING WITH NATIONAL STANDARD THREADS. FIRE DEPARTMENT CONNECTION TO BE LOCATED WITHIN 150-FOOT OF A FIRE HYDRANT. SEE FIRE PROTECTION PLANS FOR DETAILS.
  - F3 INSTALL 8" X 6" TAPPING SLEEVE PER MAG STD DETAIL 340; 6" VALVE BOX AND COVER PER MAG COP STD DETAIL P1391-1, TYPE 4A.
  - F4 INSTALL 6" D.I.P. (CLASS 350) FIRE LINE. FIRE LINE SHALL HAVE A MINIMUM OF 36 INCHES OF COVER. TRENCH, BACKFILL AND MARKER TAPE PER DETAIL SHOWN ON SHEET C1.4.
  - F5 INSTALL 6" - 90 DEGREE BEND WITH MEG-A-LUG RESTRAINED JOINTS OR CONCRETE THRUST BLOCKING PER MAG STD DETAIL 380 PER DETAIL SHOWN ON SHEET C1.4.
  - F6 CONTRACTOR TO FIELD VERIFY EXACT DEPTH AND LOCATION OF EXISTING FIRE LINE. VERTICALLY REALIGN WATER LINE PER MAG STD DETAIL 270 WITH MEG-A-LUG RESTRAINED JOINTS. PROVIDE PROTECTION PER PLUMBING CODE.
- SEWER LINE:**
- S1 FOR TWO-WAY CLEANOUT AND CONTINUATION AT THE BUILDING, SEE PLUMBING PLANS.
  - S2 CONTRACTOR TO FIELD VERIFY LOCATION OF EXISTING MANHOLE SHOWN ON ORIGINAL PLANS THAT WAS NOT FOUND IN THE FIELD. NOTIFY ENGINEER IMMEDIATELY OF ANY DISCREPANCIES. CONNECT NEW SEWER LINE.
  - S3 INSTALL 6" P.V.C. (SDR-35) SEWER LINE AT SLOPE INDICATED. MINIMUM SLOPE EQUAL ONE PERCENT. TRENCH, BACKFILL AND MARKER TAPE PER DETAIL SHOWN ON SHEET C1.4.
  - S4 INSTALL SEWER CLEANOUT PER THE UNIFORM PLUMBING CODE WITH AN APPROVED PLUG. PLUGS SHALL HAVE RAISED SQUARE HEADS OR APPROVED COUNTER-SUNK RECTANGULAR SLOTS. FRAME AND COVER PER MAG STD DETAIL 441. ADJUST FRAME AND COVER TO FINISHED GRADE AFTER PAVING RELATED GRADING CONSTRUCTION.



**ATHERTON ENGINEERING, INC.**  
CIVIL ENGINEERS AND LAND SURVEYORS  
1202 C. MCARDONOUGH AVE. PHOENIX, AZ 85014-0228  
(602) 279-7331 • FAX (602) 280-1908  
JOB NO: 17-11

100% CONSTRUCTION DOCUMENTS  
2017-2018

2500 E GERMANN RD.  
SAN TAN VALLEY, AZ 85140

**ON-SITE UTILITY PLAN**

**COMBS HS AUDITORIUM & FIELD HOUSE**

**C1.3**  
SHEET 4 OF 5  
3/17/2018  
12:36:17

**Westlake**  
**Reed**  
**Leskosky**

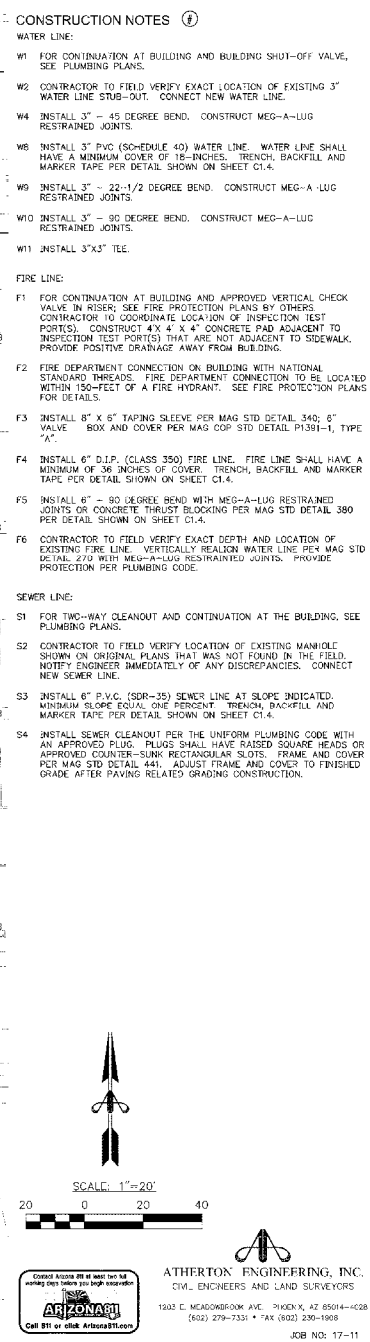
**DLR Group**

SPR-041-17

Page 5 of 17



GERMANN ROAD  
N 89°31'43" E 2637.98



DLR Group Westlake Reed Leskosky

C1.3  
SHEET 4 OF 5  
36-07132-00  
12-26-17

ON-SITE UTILITY PLAN

COMBS HS AUDITORIUM & FIELD HOUSE

2505 E GERMANI RD.  
SAN TAN VALLEY, AZ 85140

100% CONSTRUCTION  
DOCUMENTS  
2017-12-28

100% CONSTRUCTION  
DOCUMENTS  
2017-12-28

100% CONSTRUCTION  
DOCUMENTS  
2017-12-28



